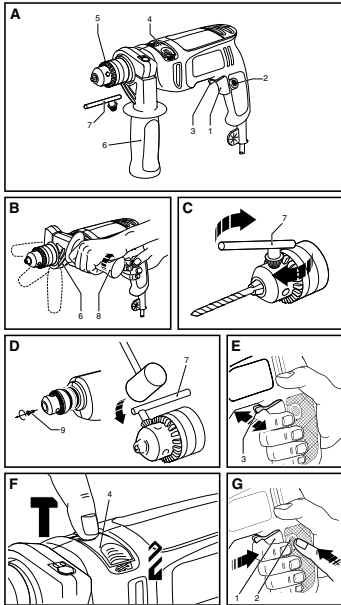


CD70K

www.blackanddecker.com

This manual is applicable for -B1 & -TW only. Black & Decker Copyright 2004 (JUN-2004)



CD70K 13mm Variable Speed Electronic Reversing Hammer Drill

Technical Data table with columns: Hammer Drill, Power Input, Rated Output Power, Chuck Size, No Load Speed, Rotation, Max. Drilling Capacity, Weight, Cable Length, Secondary Handle.

Safety Instructions

- When using power tools, always observe the safety regulations applicable in your country to reduce the risk of fire, electric shock, personal injury and material damage. Read the following safety instructions before attempting to operate this product. Keep these instructions in a safe place!
1. Keep work area clean. Cluttered areas and benches can cause accidents.
2. Cautious work area environment. Do not separate power tool from handle. Keep work area well lit (250-300 lux). Do not use Power Tools in the presence of inflammable liquids or gases.
3. Guard against electric shock. Prevent body contact with earthed surfaces (e.g. pipes, radiators, cookers and refrigerators).

- 4. Keep children away. Do not let children come into contact with the tool or extension cord. Keep all people away from the work area.
5. Stand clear tools. When not in use, power tools must be stored in a dry place and locked up securely, out of reach of children.
6. Use appropriate tool. The intended use is stated in this instruction manual. Do not force small tools or attachments to do the job of a heavy duty tool. The use of the job better and safer at rates for which it was intended. Do not force the tool.
7. Drip prevention. Do not wear loose clothing or jewelry. This can be caught in moving parts. Particularly wear other gloves and non-slip footwear when working outdoors. Wear protection for covering to long hair out of the way. When working outdoors, preferably wear suitable gloves and non-slip footwear.
8. Personal protection. Always use safety glasses. Everyday eye-wear only does not protect against the impact of flying particles. If these particles might be considerably hot, also wear a heat resistant apron. Wear ear protection whenever the sound level exceeds 90dB(A). If the sound pressure stated in this manual exceeds 95 dB(A).

- 9. Connecting dust extraction equipment. If devices are provided for the connection of dust extraction and collection ensure these are connected and properly used, especially in confined areas.
10. Do not abuse effort. Never strain the tool by too fast or by too slow a disconnected from the socket. Keep the cord away from heat, oil and sharp edges.
11. Secure workpiece. Use clamps or a vice to hold the workpiece. It is safer and it frees both hands to operate the tool.
12. Do not overreach. Keep proper footing and balance at all times.
13. Maintain tools with care. Keep the tools in good condition and clean for better and safest performance. Follow the instructions for maintenance and changing accessories. Inspect the tool cords at regular intervals and if damaged, have them repaired by an authorized repair agent. Inspect the extension cords periodically and replace them if damaged. Keep all controls dry, clean and free from all oil and grease.

- 14. Remove adjusting keys and lubricants. Always check that adjusting keys and lubricants are removed from the tool before switching on.
15. Avoid unintentional starting. Do not carry the plugged-in tool with a finger on the switch. Be sure that the switch is released when unplugging.
16. Extension cords for outdoor use. When the tool is used outdoors, only use extension cords intended for outdoor use and marked accordingly. Before use, inspect the extension cable and replace if damaged.
17. Stay alert. Watch what you are doing. Use common sense. Do not operate the tool when you are fatigued.
18. Check for damaged parts. Before using the tool, carefully check for damage to ensure that it will operate properly and perform its intended function. Check for misalignment and seizure of moving parts. Use of parts and any other conditions that may affect its operation. Have damaged parts repaired by an authorized repair agent or replaced as instructed. Do not use the tool if the switch is defective. Have any damaged or defective parts repaired by an authorized repair agent.

- 19. Have your tool repaired by an authorized repair agent. This Power Tool is in accordance with the relevant safety standards. To avoid danger, electric appliances must only be repaired by qualified technicians using original spare parts.
20. Do not force your hammer drill if it will do a better and safer job at the speed for which it was designed.
21. Keep your drill bits sharp for best and safest performance.
22. Should your hammer drill develop a fault, do not try to fix it yourself, but take it to one of our authorized repair agents.

- 23. Do not force your hammer drill. It will do a better and safer job at the speed for which it was designed.
24. Warning: Some dust created by power sanding, sawing, grinding, drilling, and other construction activities contains chemicals known to cause cancer, birth defects or other reproductive harm. Some examples of these chemicals are:
- Lead from lead-based paints.
- Crystalline silica from bricks and cement and other masonry products, and
- Arsenic and chromium from chemically-treated lumber (CCA).

- Your risk from these exposures varies, depending on how often you do this type of work. To reduce your exposure to these chemicals, work in a well-ventilated area, and work with approved safety equipment, such as those dust masks that are specially designed to filter out microscopic particles.
25. Avoid prolonged contact with dust from power sanding, sawing, grinding, drilling, and other construction activities. Wear protective clothing and wash exposed areas with soap and water. Allowing dust to get into your eyes, nose, or on the face prevents the absorption of harmful chemicals.

- Labels on your tool They may include the following symbols:
V ~~~~~ volts
A ~~~~~ Amperes
Hz ~~~~~ Hertz
W ~~~~~ Watts
Min. ~~~~~ Minutes
~ ~~~~~ Alternating current
Direct current
No load speed
Class II Construction
Earthed terminal
Safety symbol
min ~~~~~ Minutes or reception per minute
Term ~~~~~ Terminals
Save these instructions.

- Double Insulation The tool is double insulated. Double insulation means that all the external metal parts are electrically insulated from the internal electrical parts. This is done by the use of special materials between the electrical and mechanical components so as to make it unnecessary for the tool to be earthed. Note: Double insulation does not mean that the insulation is permanent and that the insulation system is not subject to wear. The insulation system is for added protection against injury resulting from a possible insulation failure within the tool.
Electrical safety The electric motor has been designed for one voltage only. Always check that the power supply corresponds to the voltage on the rating plate.
Warning: Never connect the live (L) or neutral (N) wires to the earth pin marked (E) or (⊕).

Using an Extension Cable An extension cable should not be used unless absolutely necessary. Use of an improper extension cable could result in a risk of fire and electric shock. If an extension cable must be used, use only those that are approved by the country's Electrical Authority. Make sure that extension cords in good condition before using. Always use the cord that is suitable for the power level of your tool. Use the bottom side on name plate. When using a cable reel, always unwind the cable completely.

- Features (fig. A) Your Black & Decker hammer drill has been designed for sawdriving applications and for drilling in wood, metal, bricks and concrete. This tool is intended for consumer use only.
1. Variable speed on/off trigger switch
2. Lock-on function
3. Forward/Reverse selector
4. Drilling mode selector
5. Chuck
6. Side handle
7. Chuck key

- Your Drill Includes These Features
- The variable speed switch is used to operate your drill in all modes of operation.
- The lock-on button provides continuous operation of your drill.
- The side handle gives a secondary gripping position for your drill.
- Your drill can operate as a hammer drill or as a rotary drill depending on the setting of the hammer / drill switch.
- The forward/reverse switch controls the direction of rotation when your drill is used as a screwdriver, or when clearing a jammed drill bit.

- Assembly and Adjustment Prior to assembly and adjustment always unplug the tool.
N.B. Accessories mentioned in this manual may not necessarily be included in your pack.
Fitting the Side Handle (Fig. B) The side handle can be fitted to the right-hand handle and the hand tool.

- Turning the (B) counter-clockwise until you can slide the side handle (B) onto the front of the tool as shown. Rotate the side handle into the desired position. Tighten the side handle by turning the top screw.

- Fitting and Removing a Drill Bit or Screwdriver Bit (Fig. C) Disconnect the plug from the electricity supply. Turn chuck key (C) counter-clockwise to open chuck jaws, place bit B in chuck as far as it will go and then pull it out to the length of the bit. Turn the chuck jaws do not touch the flutes of the bit. Tighten chuck collar by hand. Turn the chuck key (C) clockwise to close the jaws, and tighten in clockwise direction. It's important to tighten the chuck with all three holes to prevent bit slippage. To lock the bit in place, insert the corresponding lockwasher in just one hole, then continue to loosen chuck by hand.

- Removing and Fitting a Chuck (Fig. D) Open the chuck jaws (D) as far as possible. Insert a screwdriver into the chuck and remove the chuck retaining screw (E) by turning clockwise as shown. Insert the chuck key (F) into one of the holes in the side of the chuck and drive it with a hammer as shown.

- Insulation for Use Always disconnect the power tool from the applicable regulations. Be aware of the location of pipework and wiring.

- Selecting the Direction of Rotation (Fig. E) For drilling and for tightening screws, place the forward/reverse switch (E) in the neutral position. See arrows on tool. For loosening screws or removing a jammed drill bit, turn the forward/reverse switch (E) to the left. See arrows on tool. Always wait until the motor has come to a complete standstill before changing the direction of rotation.

- Selecting the Drilling Mode (Fig. F) For drilling in masonry, set the hammer/drill selector (F) to the H position. For drilling on other materials and for sawcutting, set the drilling mode selector (F) to the D position.

- Switching On and Off (Fig. G) To switch the tool on, press the on/off trigger switch (1). The more the trigger (1) is depressed the faster the speed will be. As a general rule, use low speeds for larger diameter drill bits and high speeds for smaller diameter drill bits. For continuous operation, press the lock-on button (2) and release the variable speed switch (1). This option is available only at full speed. To switch the tool off, release the variable speed switch (1). To switch the tool off when in continuous operation, press the variable speed switch once more and release it.

- Maintenance Your Black & Decker power tool has been designed to operate over a long period of time with a minimum of maintenance. Continuous satisfactory operation depends upon proper tool care and regular cleaning. This hammer drill is in accordance with CE mark and is subject to an authorized Black & Decker repair agent for service.

- Lubrication Your drill has been adequately lubricated before leaving the factory.
Tool Cleaning Unplug the tool before you use a cloth to clean the handle. Wipe the motor housing, slow set and dust out of the air vents to the rear. Use a Black & Decker accessories you will get the very best from your tool. Black & Decker offers a large selection of accessories available at our local dealer or authorized service center at extra cost. CAUTION: The use of any non-recommended accessories may be hazardous.

- Protecting The Environment The motor housing, slow set and dust out of the air vents to the rear. If it is of the further use to you, think of the protection of the environment. Black & Decker recommends you to contact your local council for disposal information.

- Service Information Black & Decker has a nationwide network of authorized service locations throughout Asia. All Black & Decker Service Centers are staffed with trained personnel to provide customers with efficient and reliable power tool service. Whether you need technical advice, repair or genuine factory replacement parts, contact the Black & Decker dealer nearest to you.

- Notes Black & Decker's policy is one of continuous improvement to our products and, as such, we reserve the right to change product specifications without any notice. Standard equipment and accessories may vary by country. Product specifications may differ by country. Complete product range may not be available in all countries. Contact your local Black & Decker dealer for range availability.

- EC declaration of conformity The performance of any power tool is dependent upon the accessories used. Black & Decker accessories are engineered to high quality standards and are designed to enhance the performance of your power tool. By using a Black & Decker accessories you will get the very best from your tool. Black & Decker offers a large selection of accessories available at our local dealer or authorized service center at extra cost. CAUTION: The use of any non-recommended accessories may be hazardous.

- Protecting The Environment The motor housing, slow set and dust out of the air vents to the rear. If it is of the further use to you, think of the protection of the environment. Black & Decker recommends you to contact your local council for disposal information.

- Service Information Black & Decker has a nationwide network of authorized service locations throughout Asia. All Black & Decker Service Centers are staffed with trained personnel to provide customers with efficient and reliable power tool service. Whether you need technical advice, repair or genuine factory replacement parts, contact the Black & Decker dealer nearest to you.

- Notes Black & Decker's policy is one of continuous improvement to our products and, as such, we reserve the right to change product specifications without any notice. Standard equipment and accessories may vary by country. Product specifications may differ by country. Complete product range may not be available in all countries. Contact your local Black & Decker dealer for range availability.

- EC declaration of conformity The performance of any power tool is dependent upon the accessories used. Black & Decker accessories are engineered to high quality standards and are designed to enhance the performance of your power tool. By using a Black & Decker accessories you will get the very best from your tool. Black & Decker offers a large selection of accessories available at our local dealer or authorized service center at extra cost. CAUTION: The use of any non-recommended accessories may be hazardous.

Kevin Hewitt Director of Consumer Engineering Southampton, County, Hampshire, United Kingdom

CD70K* 13 毫米米電子調速反轉震動電鑽

技術數據 table with columns: 項目名稱, 單位, CD70K. Includes: 輸入功率, 額定輸出功率, 夾頭尺寸, 空載轉速, 衝擊率, 螺絲功能, 最大鑽孔能力, 淨重, 電鑽長度, 輔助手柄.

安全指引

請仔細閱讀以下安全指引，必須閱讀有關安全指引以減少火災、電擊、人身傷害的危險。請在操作本產品前請認真閱讀本操作手冊，並把本手冊妥為保存！

- 下列建議會在本說明書中使用：
- 表示不可在未經適當培訓和許可的情況下，會有人身傷亡、機具損壞的危險。
- 表示有電擊的危險。
- 表示會有火災危險。
1. 保持工作區域清潔。 cluttered areas and benches can cause accidents.
2. 謹慎的工作環境。 Do not separate power tool from handle. Keep work area well lit (250-300 lux). Do not use Power Tools in the presence of inflammable liquids or gases.
3. 減少電擊的危險。 Prevent body contact with earthed surfaces (e.g. pipes, radiators, cookers and refrigerators).
4. 減少電擊的危險。 Do not let children come into contact with the tool or extension cord. Keep all people away from the work area.
5. 保持工具清潔。 Cleaned areas and benches can cause accidents.
6. 使用適當的工具。 The intended use is stated in this instruction manual. Do not force small tools or attachments to do the job of a heavy duty tool. The use of the job better and safer at rates for which it was intended. Do not force the tool.
7. 防止滴漏。 Do not wear loose clothing or jewelry. This can be caught in moving parts. Particularly wear other gloves and non-slip footwear when working outdoors. Wear protection for covering to long hair out of the way. When working outdoors, preferably wear suitable gloves and non-slip footwear.
8. 個人保護。 Always use safety glasses. Everyday eye-wear only does not protect against the impact of flying particles. If these particles might be considerably hot, also wear a heat resistant apron. Wear ear protection whenever the sound level exceeds 90dB(A). If the sound pressure stated in this manual exceeds 95 dB(A).

- 9. 連接吸塵設備。 If devices are provided for the connection of dust extraction and collection ensure these are connected and properly used, especially in confined areas.
10. 不要濫用工具。 Never strain the tool by too fast or by too slow a disconnected from the socket. Keep the cord away from heat, oil and sharp edges.
11. 確保工作區域安全。 Use clamps or a vice to hold the workpiece. It is safer and it frees both hands to operate the tool.
12. 不要過度伸展。 Keep proper footing and balance at all times.
13. 保持工具清潔。 Cleaned areas and benches can cause accidents.
14. 使用適當的工具。 The intended use is stated in this instruction manual. Do not force small tools or attachments to do the job of a heavy duty tool. The use of the job better and safer at rates for which it was intended. Do not force the tool.
15. 防止滴漏。 Do not wear loose clothing or jewelry. This can be caught in moving parts. Particularly wear other gloves and non-slip footwear when working outdoors. Wear protection for covering to long hair out of the way. When working outdoors, preferably wear suitable gloves and non-slip footwear.
16. 個人保護。 Always use safety glasses. Everyday eye-wear only does not protect against the impact of flying particles. If these particles might be considerably hot, also wear a heat resistant apron. Wear ear protection whenever the sound level exceeds 90dB(A). If the sound pressure stated in this manual exceeds 95 dB(A).

震動電鑽的附加安全守則

- 20. 當更換鑽頭、夾頭時，必須從旋轉的鑽頭上拆下所有附件。
21. 當更換鑽頭、夾頭時，必須從旋轉的鑽頭上拆下所有附件。
22. 當更換鑽頭、夾頭時，必須從旋轉的鑽頭上拆下所有附件。
23. 當更換鑽頭、夾頭時，必須從旋轉的鑽頭上拆下所有附件。
24. 當更換鑽頭、夾頭時，必須從旋轉的鑽頭上拆下所有附件。

- 25. 當更換鑽頭、夾頭時，必須從旋轉的鑽頭上拆下所有附件。
26. 當更換鑽頭、夾頭時，必須從旋轉的鑽頭上拆下所有附件。
27. 當更換鑽頭、夾頭時，必須從旋轉的鑽頭上拆下所有附件。
28. 當更換鑽頭、夾頭時，必須從旋轉的鑽頭上拆下所有附件。

工具上的標籤

- 工具上的標籤可能有下列符號：
V ~~~~~ 伏特
A ~~~~~ 安培
Hz ~~~~~ 赫茲
W ~~~~~ 瓦特
Min. ~~~~~ 分鐘
~ ~~~~~ 交流電
Direct current ~~~~~ 直流電
No load speed ~~~~~ 空載轉速
Class II Construction ~~~~~ 雙重絕緣
Earthed terminal ~~~~~ 接地端
Safety symbol ~~~~~ 安全警告符號
min ~~~~~ 每分鐘或每分鐘
Term ~~~~~ 每分鐘或每分鐘

雙重絕緣

本器具是雙重絕緣的，有關電氣和機械部分均採用絕緣材料製造。因此，所有外露的金屬部分都是絕緣的。雙重絕緣絕無電擊附加安全，且具備機械絕緣。雙重絕緣絕無電擊附加安全，且具備機械絕緣。雙重絕緣絕無電擊附加安全，且具備機械絕緣。

電氣安全

本器具與電氣絕緣並提供某一特定的電壓。使用時，必須查閱並認真閱讀說明書與隨附的電壓說明。切勿使用不正確的電壓。使用不正確的電壓可能會導致人身傷害或財產損失。切勿使用不正確的電壓。使用不正確的電壓可能會導致人身傷害或財產損失。

使用延長線

如欲延長，請用專用延長線。使用不正確的延長線可能會導致火災或電擊的危險。如要確保使用，請用專用延長線。使用不正確的延長線可能會導致火災或電擊的危險。如要確保使用，請用專用延長線。

